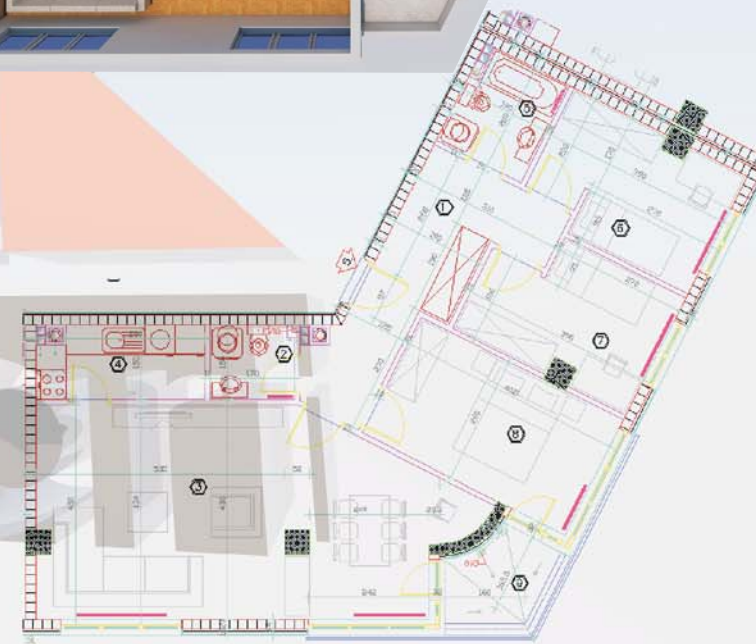


# ČETVOROSOBAN STAN 5

NETO POVRŠINE

1.HODNIK	11.16M <sup>2</sup>
2.WC	2.51M <sup>2</sup>
3.DNEVNI BORAVAK	33.27M <sup>2</sup>
4.KUHINJA	4.86M <sup>2</sup>
5.KUPATILO	4.03M <sup>2</sup>
6.SPAVAĆA SOBA	9.60M <sup>2</sup>
7.SPAVAĆA SOBA	9.10M <sup>2</sup>
8.SPAVAĆA SOBA	11.83M <sup>2</sup>
9.LODJA	2.45M <sup>2</sup>
<b>UKUPNO</b>	<b>88.81M<sup>2</sup></b>



**POZICIJA: BR.5/I SPRAT, BR.15/II SPRAT, BR.25/III SPRAT, BR.35/IV SPRAT,**